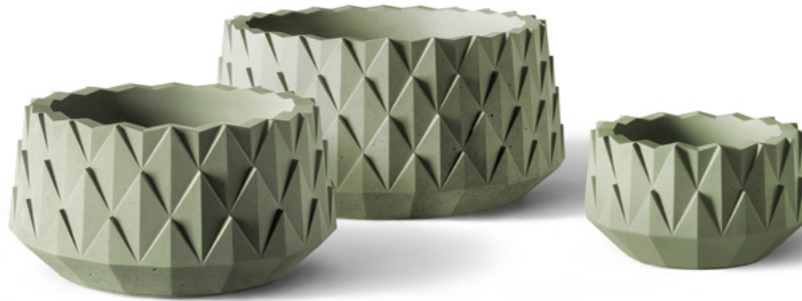




a landscapeforms® company

# Agave Series LANDSCAPE CONTAINERS

Round landscape container with stylized surface pattern.



## TO SPECIFY

Select the AS product number along with the options below.

### Drainage

- Standard diameter hole: approximately 2-3/8"
- Custom size to function with irrigation & drainage (note size of plumbing fixture to be used)

### Concrete Color

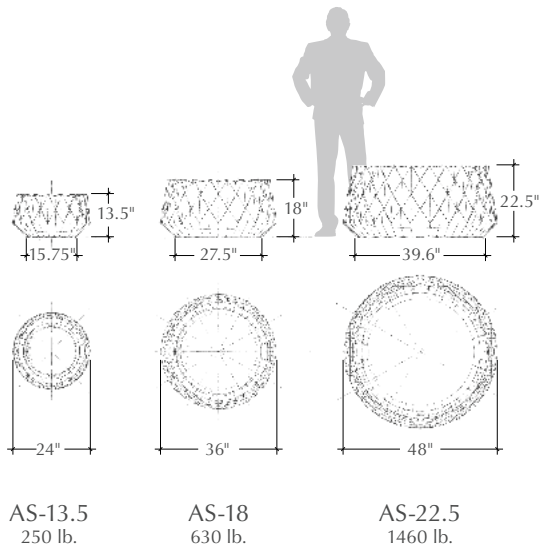
- Natural gray concrete
- Choose integral pigment color from Davis Colors ([www.daviscolors.com](http://www.daviscolors.com)), call/email us for a Davis Colors selector brochure
- Custom color mixing available

### Finishing

- Bituminous sealer (suggested for interior applications)
- Sandblast finish

### Notes

- See website to download CSI specifications
- Upcharges will apply for colors, sandblasting, sealer, and extra drain holes



All weights are approximate

In 2012©, Larry Kornegay designed the Agave Series exclusively for Kornegay Design® LLC, a Landscapeforms® company

v. 2018.03.27